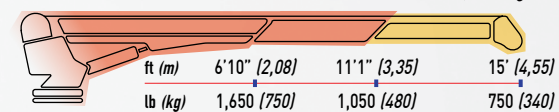


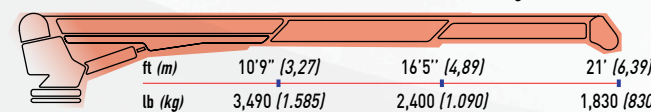
SPECIFICATIONS CARACTERÍSTICAS		HYDRAULIC CRANES GRÚAS HIDRÁULICAS											
Model Modelos		3300 H	4400 1H	4400 2H	4400 L 1H	4400 L 2H	5500 H	6600 H	8000 H	11000 2H	11000 3H	12000 2H	12000 3H
Crane Rating Capacidad de elevación	ft lb (kNm)	11,500 (16)	16,000 (27)	16,000 (27)	16,000 (27)	16,000 (27)	25,000 (34)	38,600 (52.3)	50,000 (67.8)	61,400 (83.2)	61,400 (83.2)	67,000 (90.8)	67,000 (90.8)
Number of telescopic hydraulic extensions Número de extensiones telescópicas hidráulicas		1+1 manual	1+1 manual	2	1+1 manual	2	2	2	2	2	3	2	3
Planetary gear winch, with high resistance non twisting type cable Huinche con reductor epicicloidal, con cable antigiro de alta resistencia	Hydraulic and high speed Hidráulico de alta velocidad	--	•	•	•	•	•	•	•	•	•	•	•
	Electrical Eléctricos	•	--	--	--	--	--	--	--	--	--	--	--
Patented pull line limiter system Limitador de tiro patentado		--	•	•	•	•	•	•	•	•	•	•	•
Rotation Rotación		400°	400°	400°	400°	400°	Continuous non stop Continua non stop						
Digital processor LED display on IP 67 water proof casing, providing self-diagnostic and quick settings Display LED con procesador digital, sobre cárter "waterproof" con protección IP 67, incorpora autodiagnóstico y configuración rápida		•	--	--	--	--	--	--	--	--	--	--	--
Digital proportional remote control unit (2.4 GHz) with single hand or with belly-box paddle type transmitter Radiocomando proporcional digital (2.4 GHz) con transmisión monomano o a consola		--	•	•	•	•	•	•	•	•	•	•	•
A2B system Sistema polea	Mechanical Meánico	--	•	•	•	•	•	•	•	•	•	•	•
	Electrical Eléctrico	•	--	--	--	--	--	--	--	--	--	--	--
A2B & counterweight storage new design unit with standard auto-release feature Polea y nueva versión de enganche polea con desenganche automático		--	•	•	•	•	•	•	•	•	•	•	•
Crane weight Peso de la grúa	lb (kg)	510 (230)	750 (340)	780 (355)	790 (360)	825 (375)	1,000 (455)	1,300 (580)	1,500 (670)	1,850 (840)	2,000 (920)	2,100 (950)	2,300 (1,030)

**Standard manual extensions Prolongas manuales estándar**

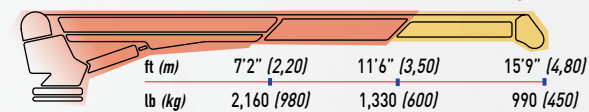
**3300 H MAX CAPACITY CAPACIDAD MÁX: lb 3,200 (kg 1.450)**



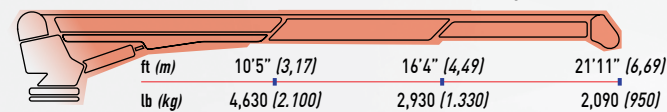
**6600 H MAX CAPACITY CAPACIDAD MÁX: lb 6,610 (kg 3.000)**



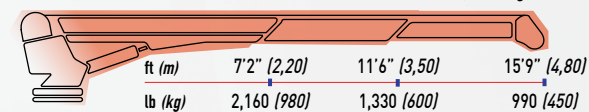
**4400.1 H MAX CAPACITY CAPACIDAD MÁX: lb 4,400 (kg 2.000)**



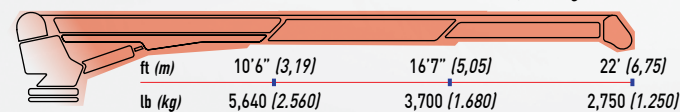
**8000 H MAX CAPACITY CAPACIDAD MÁX: lb 8,150 (kg 3.700)**



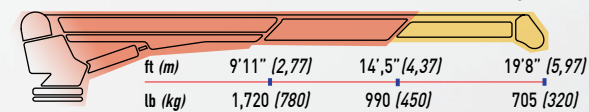
**4400.2 H MAX CAPACITY CAPACIDAD MÁX: lb 4,400 (kg 2.000)**



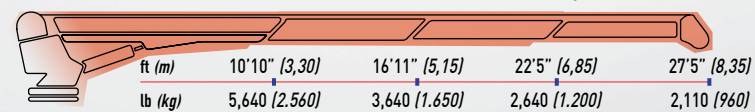
**11000.2 H MAX CAPACITY CAPACIDAD MÁX: lb 11,020 (kg 5.000)**



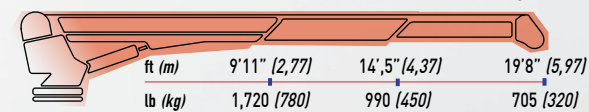
**4400 L 1 H MAX CAPACITY CAPACIDAD MÁX: lb 4,400 (kg 2.000)**



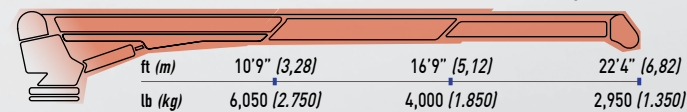
**11000.3 H MAX CAPACITY CAPACIDAD MÁX: lb 11,020 (kg 5.000)**



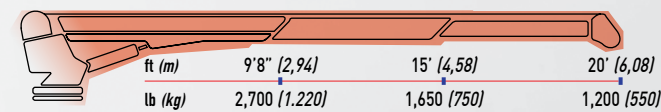
**4400 L 2 H MAX CAPACITY CAPACIDAD MÁX: lb 4,400 (kg 2.000)**



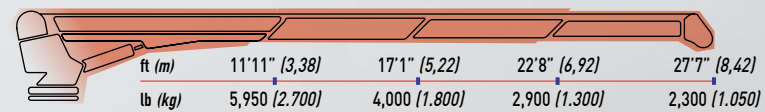
**12000.2 H MAX CAPACITY CAPACIDAD MÁX: lb 11,900 (kg 5.400)**



**5500 H MAX CAPACITY CAPACIDAD MÁX: lb 5,100 (kg 2.300)**

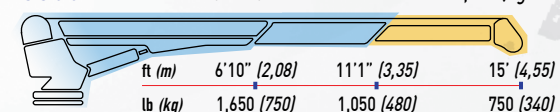


**12000.3 H MAX CAPACITY CAPACIDAD MÁX: lb 11,900 (kg 5.400)**

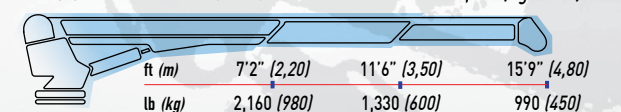


SPECIFICATIONS CARACTERÍSTICAS		DC12/24 ELECTRO-HYDRAULIC CRANES GRÚAS ELECTROHIDRÁULICAS								
Model Modelos		3300 W	3300 E	4400 W	4400 1E	4400 2E	4400 L 1E	4400 L 2E	5500 E	
Crane Rating Capacidad de elevación	ft lb (kNm)	11,500 (16)	11,500 (16)	16,000 (27)	16,000 (27)	16,000 (27)	16,000 (27)	16,000 (27)	25,000 (34)	
Number of telescopic hydraulic extensions Número de extensiones telescópicas hidráulicas		v	1+1 manual	1+1 manual	1+1 manual	2	1+1 manual	2	2	
Planetary gear winch, with high resistance non twisting type cable Huinche con reductor epicicloidal, con cable antigiro de alta resistencia	Hydraulic and high speed Hidráulico de alta velocidad	--	•	--	•	•	•	•	•	
	Electrical Eléctricos	•	--	•	--	--	--	--	--	
Patented pull line limiter system Limitador de tiro patentado		--	--	--	•	•	•	•	•	
Rotation Rotación		400°	400°	400°	400°	400°	400°	400°	Continuous non stop Continua non stop	
Digital processor LED display on IP 67 water proof casing, providing self-diagnostic and quick settings Display LED con procesador digital, sobre cárter "waterproof" con protección IP 67, incorpora autodiagnóstico y configuración rápida		•	•	•	--	--	--	--	--	
Digital proportional remote control unit (2.4 GHz) with single hand or with belly-box paddle type transmitter Radiocomando proporcional digital (2.4 GHz) con transmisión monomano o a consola		--	--	--	•	•	•	•	•	
A2B system Sistema polea	Mechanical Meánico	--	--	--	•	•	•	•	•	
	Electrical Eléctrico	•	•	•	--	--	--	--	--	
A2B & counterweight storage new design unit with standard auto-release feature Polea y nueva versión de enganche polea con desenganche automático		--	--	--	•	•	•	•	•	
Crane weight Peso de la grúa	lb (kg)	530 (240)	550 (250)	700 (320)	790 (360)	825 (375)	840 (380)	870 (395)	1,060 (480)	

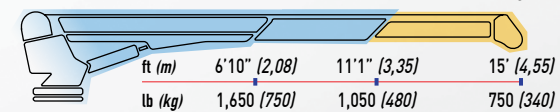
**3300 W MAX CAPACITY CAPACIDAD MÁX: lb 3,200 (kg 1.450)**



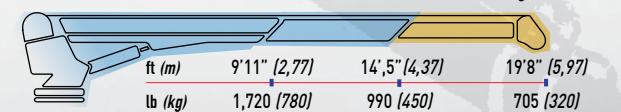
**4400.2 E MAX CAPACITY CAPACIDAD MÁX: lb 4,400 (kg 2.000)**



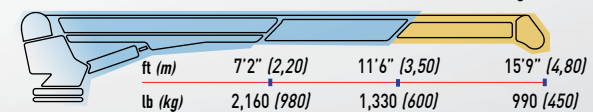
**3300 E MAX CAPACITY CAPACIDAD MÁX: lb 3,200 (kg 1.450)**



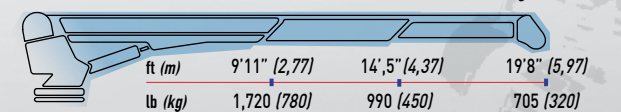
**4400 L 1 E MAX CAPACITY CAPACIDAD MÁX: lb 4,400 (kg 2.000)**



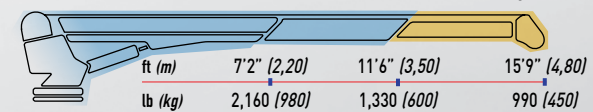
**4400 W MAX CAPACITY CAPACIDAD MÁX: lb 4,400 (kg 2.000)**



**4400 L 2 E MAX CAPACITY CAPACIDAD MÁX: lb 4,400 (kg 2.000)**



**4400.1 E MAX CAPACITY CAPACIDAD MÁX: lb 4,400 (kg 2.000)**



**5500 E MAX CAPACITY CAPACIDAD MÁX: lb 5,100 (kg 2.300)**

